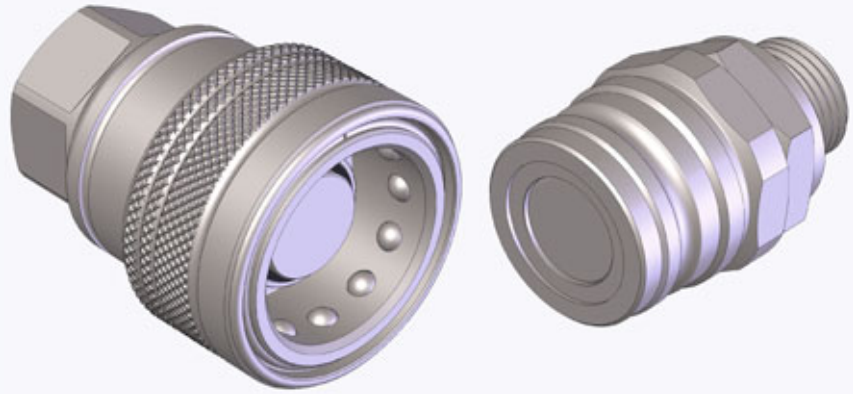


BRAKE VALVE/ISO 5676

VALVOLA FRENI
BRAKE VALVE
BREMSVENTIL
VALVE FREINAGE

Caratteristiche tecniche I

- Norma: ISO 5676
- Occlusione: faccia piana
- Aggancio: sfere radiali
- Materiale: acciaio
- Finitura: Zn-Fe (Cr III)
- Filettature: BSP - SAE - METRICHE
- Guarnizioni standard: NBR
- Temperatura d'esercizio: -25 °C +100 °C
- Pressioni di esercizio: 150 bar
- Connessione in pressione: non consentita



Technical data E

- Standard: ISO 5676
- Occlusion: flat face
- Locking: radial balls
- Material: steel
- Finishing: Zn-Fe (Cr III)
- Threads: BSP - SAE - METRICS
- Standard seals: NBR
- Working temperature: -25 °C +100 °C
- Working pressure: 150 bar
- Connection under pressure: not allowed

Nominal size				Max working pressure	Rated flow	Max flow rate	Min burst pressure			Fluid spillage
DNP	BG	ISO	mm				Male	Female	Coupled	
13	3	12.5	8	15 MPa	24 l/min	48 l/min	90 MPa	62 MPa	93 MPa	0.05 cc

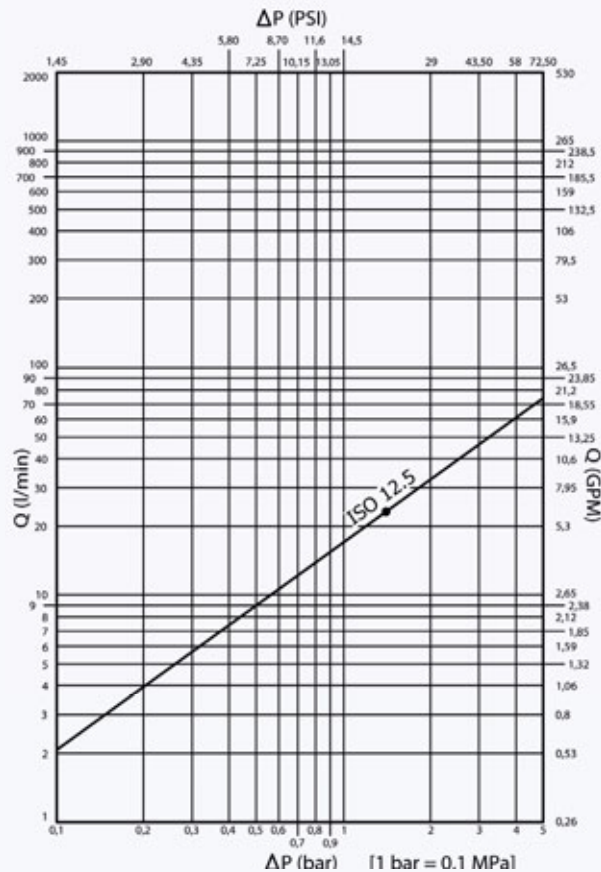
1 MPa = 145.04 psi • 1 l = 0.264 gal

Technische Merkmale D

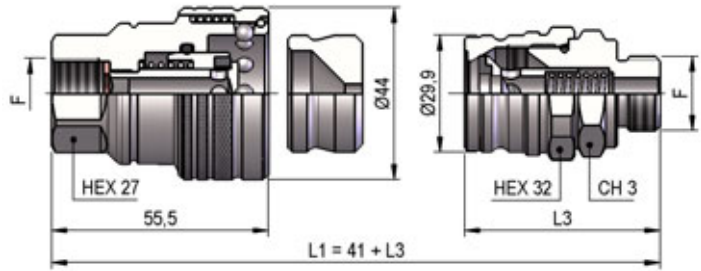
- Norm: ISO 5676
- Verschluss: flachdichtend
- Kupplung: Radialkugeln
- Werkstoff: Stahl
- Ausführung: Zn-Fe (Cr III)
- Gewinde: BSP - SAE - METRISCHE
- Standard-Dichtungen: NBR
- Betriebstemperatur: -25 °C +100 °C
- Betriebsdruck: 150 bar
- Kuppeln unter Druck: nicht möglich

Caracteristiques techniques F

- Norme: ISO 5676
- Obturation: clapet plat
- Accrochage: billes radiales
- Matériel: acier
- Traitement: Zn-Fe (Cr III)
- Taraudage: BSP - SAE - METRIQUES
- Joints standard: NBR
- Température de service: -25 °C +100 °C
- Pression de service: 150 bar
- Connexion sous pression: pas possible

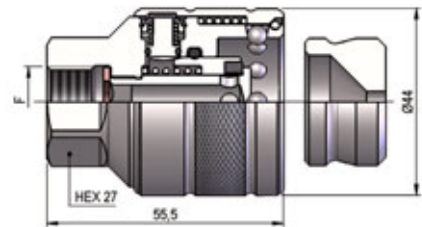


PFT DN13 - BG 3 - ISO 12.5

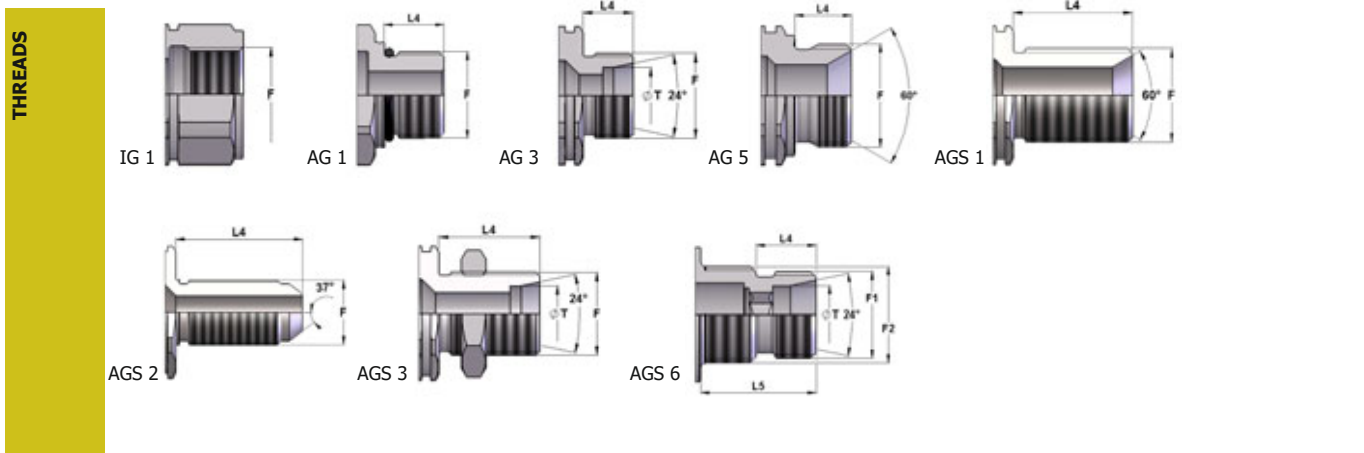


THREADS	CH3	L3	L4	L5	ØT	F1	F2	F	STANDARD	FEMMINA-FEMALE-MUFFE -FEMELLE			MASCHIO-MALE-STECKER-MALE		
										COD. F	Weight (g)	Pack. (pcs.)	COD. M	Weight (g)	Pack. (pcs.)
IG 1								BSP 3/8"	DIN 3852-2-X	PFT1.1310.002	398	36			
	28	57						BSP 1/2"	DIN 3852-2-X	PFT1.1313.002	389	36	PFT3.1313.113	211	50
								M18x1.5	ISO 6149-1	PFT1.1318.102	402	36			
AG 5			48	15.5				BSP 1/2"	DIN 3852-2-A				PFT3.1313.213	153	50
AGS 3			49	21		12L		M18x1.5	ISO 8434-1-L				PFT3.1318.503	142	50
			58	30		12L		M18x1.5	ISO 8434-1-L				PFT3.1318.523	152	50
			51	23		Ø13.4		M20x1.5	-				PFT3.1320.503	154	50
			41	23		15L		M22x1.5	ISO 8434-1-L				PFT3.1322.503	172	50
		32	82	28		15L		M22x1.5	ISO 8434-1-L				PFT3.1322.623	357	50
		63	35			15L		M22x1.5	ISO 8434-1-L				PFT3.1322.603	198	50
AGS 6		52.5	12.5	24.5	Ø10	M16x1.5	M20x1.5	-	-				PFT3.1336.503	152	50
		52	12.5	24	Ø12	M18x1.5	M20x1.5	-	-				PFT3.1338.503	152	50
AG 1		28	50	11				3/4"-16 UNF 2A	SAE J 1926-2				PFT3.1319.223	131	50
AG 3		32	65	12		12L		M18x1.5	ISO 8434-1-L				PFT3.1318.303	287	50
		32	65	12		15L		M22x1.5	ISO 8434-1-L				PFT3.1322.303	293	50
AGS 1			65	37				M22x1.5	DIN 3863-U				PFT3.1322.613	205	50
AGS 2		28	89.5	16.7				3/4"-16 UNF 2A	SAE J 514				PFT3.1319.503	192	50
		32	94	40				7/8"-14 UNF 2A	SAE J 514				PFT3.1378.603	365	50

PFTB DN13 - BG 3 - ISO 12.5



THREADS	F	STANDARD	FEMMINA-FEMALE-MUFFE -FEMELLE		
			COD. F	Weight (g)	Pack. (pcs.)
IG 1	BSP 3/8"	DIN 3852-2-X	PFTB.1310.002	373	36
	BSP 1/2"	DIN 3852-2-X	PFTB.1313.002	365	36



PLASTIC - METAL CAPS

NOMINAL SIZE			FEMALE DUST PLUG	MALE DUST CAP	COLOR	MATERIAL	
DNP	BG	ISO	COD. F	Weight (g)	COD. M	Dimensions D L D1	Weight (g)
13	3	12.5	PFT.013.993*	68	-	- - -	-
13	3	12.5	-	-	SPFT.13053	37 135 29.5 7	● Polyethylene

*NORMALMENTE FORNITO CON LA FEMMINA - SUPPLIED STANDARD WITH THE FEMALE - WIRD MIT DER MUFFE GELIEFERT
FOURNI EN STANDARD AVEC COUPLEUR

